

REV.
E

AS4687™

RATIONALE

ADDED CONDUCTIVE HIGH PURITY ALUMINUM COATING FOR ALUMINUM ALLOY FITTINGS.

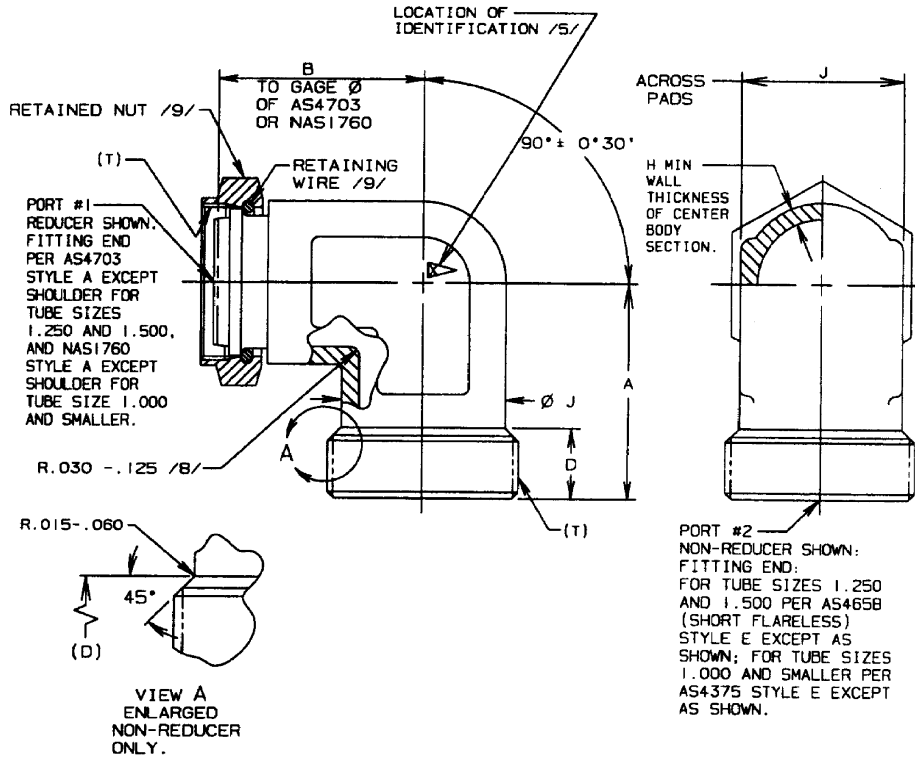


FIGURE 1 - ELBOW ASSEMBLY, 90°

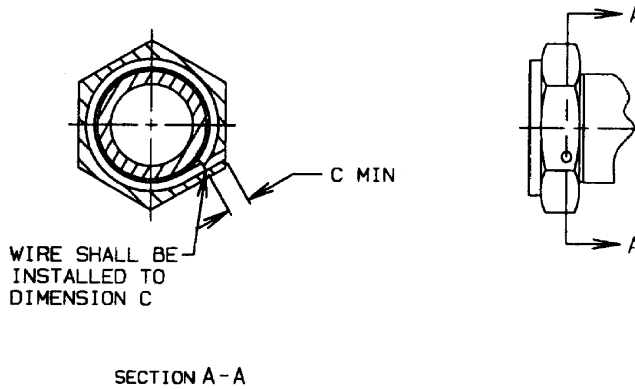
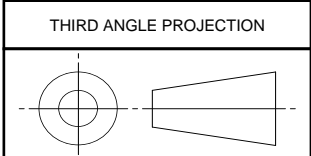


FIGURE 2 - INSTALLATION, RETAINED NUT AND RETAINING WIRE

SAE values your input. To provide feedback on this Technical Report, please visit <http://standards.sae.org/AS4687E>



CUSTODIAN: G-3/G-3B

PROCUREMENT SPECIFICATION: AS18280 /4/



AEROSPACE STANDARD

FITTING ASSEMBLY, ELBOW, 90°, FLARELESS AND SHORT FLARELESS, REDUCER, RETAINED NUT

AS4687™
SHEET 1 OF 5

REV.
E

SAE Technical Standards Board Rules provide that: "This report is published by SAE to advance the state of technical and engineering sciences. The use of this report is entirely voluntary, and its applicability and suitability for any particular use, including any patent infringement arising therefrom, is the sole responsibility of the user." SAE reviews each technical report at least every five years at which time it may be revised, reaffirmed, stabilized, or cancelled. SAE invites your written comments and suggestions.

TABLE 1 - DIMENSIONS AND WEIGHTS

BASIC NO. AS4687 /10/ /19/ SIZE CODE	D	H	J +.005/- .020	LB/EA APPROX REF ALUM	LB/EA APPROX REF CRES	LB/EA APPROX REF TI
20	.517	.124	1.375	.332	.964	.560
24	.614	.156	1.688	.502	1.430	.828

TABLE 2 - WIRE INSERTION DEPTH

PORT SIZE	(NOMINAL TUBE SIZE)	C
04	.250	.076
05	.312	.076
06	.375	.084
08	.500	.095
10	.625	.114
12	.750	.150
16	1.000	.176
20	1.250	.247
24	1.500	.287

TABLE 3 - LEG LENGTH A

SIZE OF PORT #2	FORGING SIZE /10/ 20	FORGING SIZE /10/ 24
04	1.424	1.549
05	1.424	1.549
06	1.440	1.565
08	1.533	1.658
10	1.596	1.721
12	1.659	1.784
16	1.659	1.784
20	1.678	1.577
24	---	1.803

TABLE 4 - LEG LENGTH B

SIZE OF PORT #1	FORGING SIZE /10/ 20	FORGING SIZE /10/ 24
04	1.401	1.526
05	1.453	1.578
06	1.514	1.639
08	1.611	1.736
10	1.690	1.815
12	1.679	1.804
16	1.727	1.852
20	1.603	1.728
24	---	1.756

**AEROSPACE STANDARD**FITTING ASSEMBLY, ELBOW, 90°, FLARELESS AND
SHORT FLARELESS, REDUCER, RETAINED NUT**AS4687™**
SHEET 2 OF 5**REV.**
E